



MATTIE RHODES CENTER

cultures social  
individuals services  
community families youth  
bilingual  
civic leadership ART  
mental health YYY



BRIGHTENING LIVES,  
BUILDING FUTURES



The Mattie Rhodes Center is a nonprofit agency serving the Greater Kansas City community, with a strong expertise in providing culturally competent bilingual services to a Hispanic and/or Spanish-speaking population. The organization has 119 years of experience providing community-based services, and is the only fully bilingual and bicultural behavioral health care provider in the region that is both nationally accredited by the Council on Accreditation and certified by the Missouri Department of Mental Health.

The people the agency serves are living in high crime neighborhoods with an unemployment rate that is 10% higher than the rest of Kansas City. Among those served, 93% live below the federal poverty level. Approximately 70% of our clients are female and 30% male, ranging in age from 6 to 82 years old.

Operating on a budget just under \$2.3 million, the Mattie Rhodes Center provides services within four strategic areas:

- Families
- Youth
- Community
- Cultural Arts

Throughout its history, the agency has responded to community needs, a changing environment, technological advances, and economic fluctuations. Within the past 15 years alone the agency's staff has more than tripled and program space has increased from 9,000 square feet to 29,000 square feet.

The Mattie Rhodes Center is committed to building a stronger Kansas City, working toward the vision of living in a vibrant community where all individuals and families are healthy, safe and have the resources to thrive.



# Agency Overview



This past year was a milestone in the 119 year history of the Mattie Rhodes Center. Following a rigorous, 10 month process that required our Board of Directors, staff and those we serve to assess and formalize our policies and procedures; program development; and evaluation of services, the agency earned national accreditation from the Council on

Accreditation, ensuring those we serve that our practices are carried out with the highest level of quality, skill, and integrity.

The year also saw the Board of Directors adopt a new three-year Strategic Plan. The goals include: strengthen the quality of existing services; achieve financial stability; and capitalize on opportunities for program growth.

In addition, the agency dedicated itself to strategically meeting the growing needs of Kansas City by convening various community partners and volunteers to meet unmet needs: behavioral health services for families in the Kansas City Public Schools, music appreciation for urban core Latino students; and a comprehensive approach to improving education among youth and adults in Kansas City's Historic Northeast area.

What was evident this year and is apparent to our culture, the Mattie Rhodes Center embraces the notion that for us to be effective in the community, we must collaborate and partner with others.

The agency has the capacity to work with others for a common cause, be multi-focused, and accomplish specific tasks. For example, we worked with the Kansas City Public Schools to form the Behavioral Health Network, a group of behavioral health providers who will serve students in the district. As we look ahead, the agency will focus on:

**Long-term financial sustainability** – plans are underway to consolidate our Art Center and Gallery.

**Operating smarter not harder** – the agency has commissioned two planning studies to guide its work into the future. This includes a study focused on quality of life issues for the residents of Historic Northeast and a metropolitan-wide Hispanic needs assessment.

**Find ways to market our agency** – the agency will continue to broaden its brand through our annual special events that include The Gala; Golf Tournament; First Friday Exhibits; and our annual Brightening Lives, Building Futures Luncheon.

On behalf of our Board of Directors, the staff and our participants, thank you for your support of the Mattie Rhodes Center. I look forward to our journey ahead as we seek to realize our vision of ensuring that all individuals, families and communities are healthy, safe and have the resources they need to thrive!

A handwritten signature in cursive script that reads "John Fierro".

John Fierro, MBA, MPA  
President/CEO

# Letter From the President/CEO





## OUR MISSION

Mattie Rhodes Center enriches the lives of individuals, families and communities in a respectful, multicultural environment.

## OUR VISION

We envision a vibrant community where individuals and families are healthy, safe and have the resources to thrive.

The agency's vision is the driving force behind the Mattie Rhodes Center's programs and services, which are designed to meet the following documented needs:

- Latinos are identified as a high-risk group for depression, anxiety, and substance abuse. (*Quality Health Services for Hispanics: The Cultural Competency Component. National Alliance for Hispanic Health, 2001.*)
- The FBI has reported that a woman is physically abused by her partner every nine seconds in the United States. Children are present during 80% of the assaults against their mothers, and 3 million children witness domestic violence each year.
- Regular participation in high-quality afterschool programs is linked to significant gains in standardized test scores and work habits. (*University of California, Irvine, 2007.*)
- Multiple studies have concluded that curricular and extracurricular art studies and activities help keep high-risk dropout students in school. (*"The Complete Curriculum." The Report of the NASBE Study Group on the Lost Curriculum. National Association of State Boards of Education. October 2003.*)
- Hispanic health is often shaped by factors such as language/ cultural barriers, lack of access to preventive care, and the lack of health insurance. Hispanics have higher rates of obesity than non-Hispanic Caucasians. (*U.S. Department of Health and Human Services Office of Minority Health: Hispanic/Latino Profile. September 7, 2012.*)

# Our Mission and Vision



*In 2012, the Mattie Rhodes Center Team:*

Provided more than **6,000** hours of counseling and case management services in both English and Spanish to nearly **620** individuals and families facing behavioral health, family violence and substance abuse challenges.

Served nearly **520** youth and young adults with out-of-school and in-school programming, including counseling and crisis intervention services, academic support, recreation and physical activities, and support for young adults with developmental disabilities.

Reached more than **1,900** children and adults through health and wellness activities such as Zumba classes, weekly Farmer's Market, and the Community Garden.

Conducted informative classes, forums and large-scale events for an estimated **1,000** community members.

Engaged approximately **2,400** children in educational cultural arts programming, and welcomed more than **4,000** visitors to cultural arts exhibitions.

# Serving the Community



## SUBSTANCE ABUSE

The *Nuevo Amanecer* (“New Dawn”) program provides outpatient substance abuse treatment designed to decrease illicit drug use and abuse, and to increase the level of overall functioning and well-being of participants.

- **Individual Counseling:** Adolescents and adults receive one-on-one bilingual counseling with a trained and certified substance abuse counselor and create a relapse prevention plan.
- **Group Counseling:** Adults participate in weekly counseling in a group setting with other persons struggling with substance abuse challenges.

## FAMILY VIOLENCE

The *Nuevo Dia* (“New Day”) and the *Otro Camino* (“Another Path”) programs offer a range of bilingual services to incorporate strength and resiliency toward healing, well-being and healthy family interactions.

### *Nuevo Dia Program:*

- **Therapy:** Survivors of intimate partner violence and their children receive individualized therapeutic services, build self-confidence and resilience, work toward concrete goals, and devise a safety plan.
- **Service Coordination:** Service coordinators assist survivors with accessing community resources, securing services, locating emergency assistance, and working with the police department.
- **Legal Support:** Survivors and their families receive help in accessing legal resources and remedies in navigating the complicated court system.

### *Otro Camino Program:*

- **Batterer’s Intervention Program:** The *Otro Camino* (“Another Path”) program provides group counseling services focused specifically on the batterers.

## BEHAVIORAL HEALTH

The Mattie Rhodes Center employs a family-focused, strengths-based model of therapeutic and social services in Kansas and Missouri.

- **Therapy:** Clinically trained, licensed therapists use a variety of treatment modalities – family-systems therapy, cognitive behavioral therapy, psycho-educational methods, play therapy, and solution-focused therapy – in working with participants to improve individual, interpersonal, social and overall functioning.
- **Service Coordination:** Service coordinators provide linkages for participants to services in the community, such as education, employment, legal services, public assistance, health and dental care, housing and many other services.

# Family Support





## YOUTH DEVELOPMENT

The EXPLORE (Expanding Life-skills in a Recreational Environment) youth development program (grades K-12) provides innovative, educational out-of-school programming for youth in the Northeast community. EXPLORE programming collectively focuses on life skills that are critical in preventing the cycle of bullying, violent behavior, gang activity, and crime within the neighborhood. The skills taught include:

- Cultural tolerance,
- Dealing with negative peer pressure,
- Conflict resolution skills, and
- Avoiding risky behaviors such as substance abuse.



## IN-SCHOOL SERVICES

The Mattie Rhodes Center provides a School Social Worker and School Service Coordinator to three partner schools: James Elementary, Northeast High School, and East High School. This enables our team to provide crisis intervention, service coordination, and therapy for students on site. Our goal is to tend to issues affecting the behavioral health of youth with the philosophy that when these needs are met students can focus; leading to increased academic achievement.



## SUPPORTIVE LIVING

The Visionaries program is designed to improve the quality of life for young adults with developmental disabilities by connecting them with peers, social activities, classes, and fieldtrips that focus on individual strengths and build self-esteem and self-confidence. The program facilitates and promotes self-development, independent living, self-advocacy, and community inclusion. The young adults receive transitional services, and independent living and social skills trainings.

# Youth Development



## COMMUNITY EMPOWERMENT

The Mattie Rhodes Center is working in neighborhoods and communities where residents feel disenfranchised and face many challenges including blight, gangs, and graffiti, and often times the result is apathy. The Mattie Rhodes Center team works to engage those residents by providing the tools and knowledge they need to become advocates on behalf of their community.

The work of the Mattie Rhodes Center's Team has evolved into a collective approach. The team seeks to encourage, involve and enable residents, city officials, and business owners to work together to create positive changes in the community, including the areas of economic development, health, housing, and public safety. Early efforts have resulted in Mattie Rhodes Center securing more than a quarter of a million dollars used to develop a market study, create a transportation analysis of Independence Avenue, complete a Blight Study of Indian Mound and Lykins Neighborhoods, and complete a quality of life study for Indian Mound. These documents will pave the way for future investment of public and private dollars to create a more sustainable community.

Additional community outreach activities include forums, resources and educational opportunities to help residents address safety concerns. Mattie Rhodes is also home to the Latino Advocacy Taskforce. The Task Force, initiated largely by three mothers of murdered children, provides advocacy for families who have lost loved ones to gang violence, assists the police with community relations, educates the community about the criminal justice system, and offers counseling support.

## HEALTH AND WELLNESS

We have many activities to encourage healthy, active living:

- Our Jubilee Garden beds near our Northeast location are available for rent from March to November to encourage healthy eating.
- Locally grown or produced fruit, vegetables, meat, dairy, and grain products are available from May to October at our Northeast La Chalupa Farmer's Market.
- Zumba classes are offered to adults, children, and seniors.
- Youth can participate in a nationally recognized soccer program, offered in partnership with local elementary schools.
- Nutrition classes for adults and children are offered at varied times of the year.

# Community Support





## ART EDUCATION

The Mattie Rhodes Center believes that the arts are a basic and integral part of every person's education and growth. The agency's goal is to educate the community about Latino culture and traditions through the visual arts. Together the Mattie Rhodes Art Center and Art Gallery offer a wide range of creative programs and opportunities for children and adults, including:

- Visual art classes and cultural workshops
- Spring and summer art camps for ages 2-16
- Art exhibits that explore cultural themes
- Group tours and fieldtrips
- Cultural heritage events
- Special event programming (birthdays, team building activities, etc.)

Visit our Art Gallery and Art Center for a unique, authentic cultural arts experience.

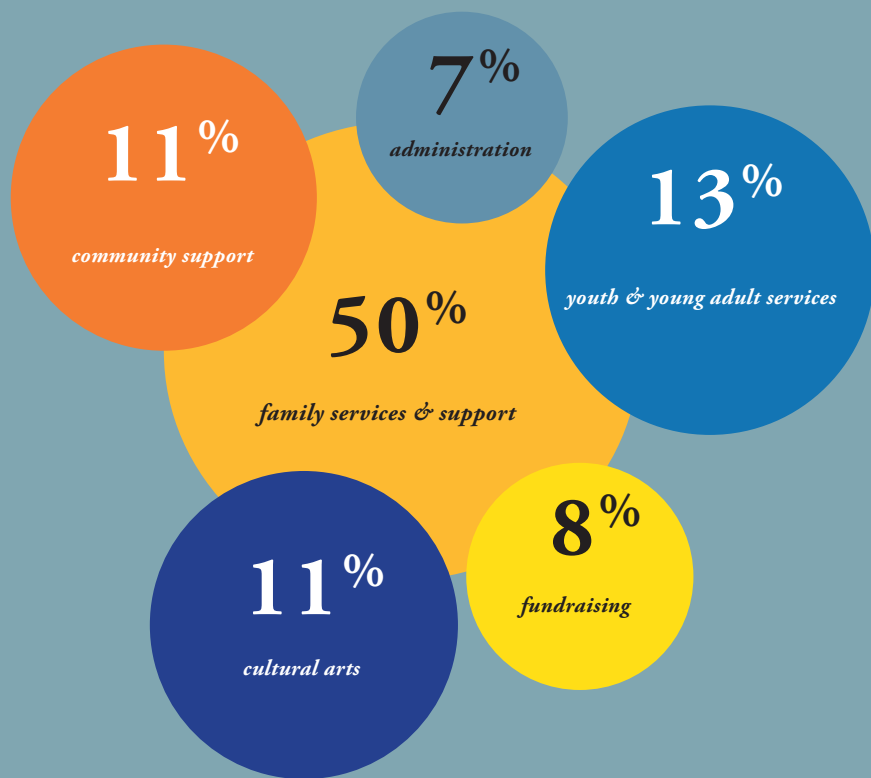


# Cultural Arts

Mattie Rhodes is committed to providing quality services for families, youth, individuals, and groups.

*The financial statement for the fiscal year ending December 31, 2012, is summarized below.*

*The percentages below show our 2012 expense allocations.*



REVENUE		
Foundation Contributions	\$816,263	38.26%
Corporate Contributions	36,362	1.7%
Individual Contributions	14,888	0.7%
Special Event Contributions	102,133	4.79%
United Way + Federated Campaigns	180,963	8.48%
Government Grants & Contracts	810,189	37.97%
Program Service Fees	124,651	5.84%
Other Income	48,098	2.25%
<i>Total:</i>	<i>\$2,133,547</i>	

EXPENSES		
General Administration	\$159,677	7.3%
Fundraising	171,603	7.84%
Community Support	235,096	10.74%
Family Services & Support	1,085,940	49.61%
Youth & Young Adult Services	296,427	13.54%
Cultural Arts	239,996	10.97%
<i>Total:</i>	<i>\$2,188,739</i>	

PROFIT/LOSS \$-55,192

*Note: The total amount reflected for 2012 expenses includes \$68,115 for depreciation expense. According to Generally Accepted Accounting Principles, depreciation is a non-cash expenditure that is charged for almost all tangible assets. The actual end-of-the-year cash position of Mattie Rhodes Center is a profit of \$12,923.*

# Financial Statement



**Joe Medina, Chair**  
Kansas City Power & Light

**Andrea Gomez, Chair Elect**  
Hallmark Cards, Inc.

**Marissa Gencarelli, Vice Chair**  
Cerner Corporation

**David A. Sanchez Jr., Treasurer**  
PricewaterhouseCoopers LLP

**Marshaun Butler, Secretary**  
Children's Mercy South

**Jose Benedetto**  
US Bank

**McClain Bryant**  
Husch Blackwell LLP

**Sara Buck**  
Barkley

**Jan Buerge**  
World's Window

**Lynn Carlton**  
360 Architecture

**Larry Close**  
Burns & McDonnell

**Terri Curran**  
Community Volunteer

**Clinton B. Fields Jr.**  
Truman Medical Center Lakewood

**Gerardo Garcia**  
UMB Financial Corp.

**Heber Gonzalez**  
Black & Veatch Corporation

**Sheri Gormley**  
University of Missouri-Kansas City

**Katie Greer**  
LocalStart.org

**Shannon Jaax**  
Kansas City Missouri School District

**Begonya Klumb**  
UMB Financial Corp.

**Sam McGriff**  
John Deere

**Patrick Meraz**  
Jones Lang LaSalle

**Jason Romero**  
Stinson Leonard Street LLP

**Steve Turley**  
Turley Design

**Steve Wright**  
Sprint

**Christine Yannitelli**  
Metropolitan Community Colleges

# 2014 Board of Directors





The Mattie Rhodes Center could not do the work it is doing in the community without your support. Please consider making a donation, being a special event sponsor, or giving of your time to volunteer. Together, we can make lasting change in our community.

## WAYS TO GIVE

- **United Way Pledge**  
Designate your pledge to the Mattie Rhodes Center (designation #550)
- **Planned Gift**  
Remember the Mattie Rhodes Center in your estate planning
- **Corporate Matching Programs**  
Ask your company about matching your gift
- **Donation**  
Donate online at [www.mattierhodes.org](http://www.mattierhodes.org) or send a check to:  
Mattie Rhodes Center  
Attn: Development Department  
1740 Jefferson Street  
Kansas City, MO 64108

## VOLUNTEER

If you would like to volunteer or have any additional questions, please contact the Development Department at 816-471-2536 or [info@mattierhodes.org](mailto:info@mattierhodes.org).

# How You Can Help

# Brightening Lives, Building Futures

## Locations

*Counseling and Administrative*  
1740 Jefferson Street  
Kansas City, MO 64108  
(816) 471-2536

*Counseling and Community Support*  
148 N. Topping Avenue  
Kansas City, MO 64123  
(816) 241-3780

*Art Center & Art Gallery*  
915 & 919 W. 17th Street  
Kansas City, MO 64108  
(816) 221-2349

## Satellite Counseling Offices

*Argentine Middle School*  
2123 Ruby Avenue  
Kansas City, KS 66106  
(913) 627-6787

*St. John the Evangelist Church*  
2910 Strong Avenue  
Kansas City, KS 66106  
(816) 581-5625

\* Hours vary by location.  
Please call or visit our website  
in advance of your visit.



[www.mattierhodes.org](http://www.mattierhodes.org)

design by:



EVELYNGRUNDY  
@GMAIL.COM